








Installation instruction Anti-glare system



MAIBACH anti-glare system
Certified according to
European norm EN 12676

Components

(for 1 unit = 4 meters)

 <p>Steel tube Length 3.960 mm galvanized, with 6 welded vane holders</p>	 <p>Vanes 6 pieces</p>	 <p>Mounting head 1 piece (end unit: 2 pieces) Galvanized <i>Different types available; picture shows type for SIGMA post</i></p>	 <p>Fixing material for vanes 6 sets galvanized 1 set = 2 screws, nuts, washers 4 U-discs</p>	 <p>Fixing material for mounting head 2 sets galvanized 1 set = 2 screws, nuts, washers</p>
---	--	--	--	---

Installation steps

1.

Attach the mounting head and fix the screw to the post

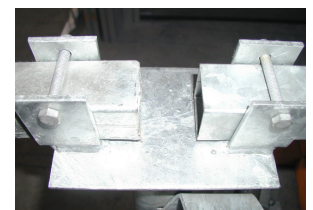


2.

a. Insert the tube end into the U-profile.

b. Attach the tube with the fixing material.

c. Insert the beginning of the next tube to the other U-profile and attach it.



The distance between the tubes can compensate differences of post distances (caused by ramming of posts or material dilations).

3.

a. Line up the tubes.

b. Attach the vanes with the fixing material.



a.



b.

4.

Alternative to step 3

In order to reduce the time of traffic obstructions due to installation:

The vanes can also be pre-installed to the tube in a warehouse, before installation of the tubes to the crash barrier.

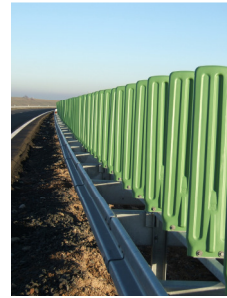
Pre-installation of vanes:

a. Attach the vanes to the tube (before transportation to the construction site).

b. Install the tubes with attached vanes at the construction site.



a.



b.

Estimated installation time:

Attachment of vanes to the 4-meter tube:

1 person in 1 hour = approx. 20 – 24 meters

Installation of mounting head + tube:

2 persons in 1 hour = approx. 50 meters

(approx. 5 minutes per 4 meters)